

● RUN START (POWER / DATA FEED)

➔ DAISY CHAIN

**DMX PROFILE - EACH GROUP (4CH RGBW)**

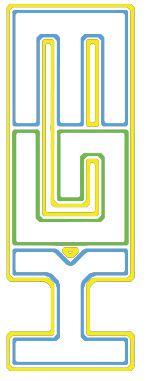
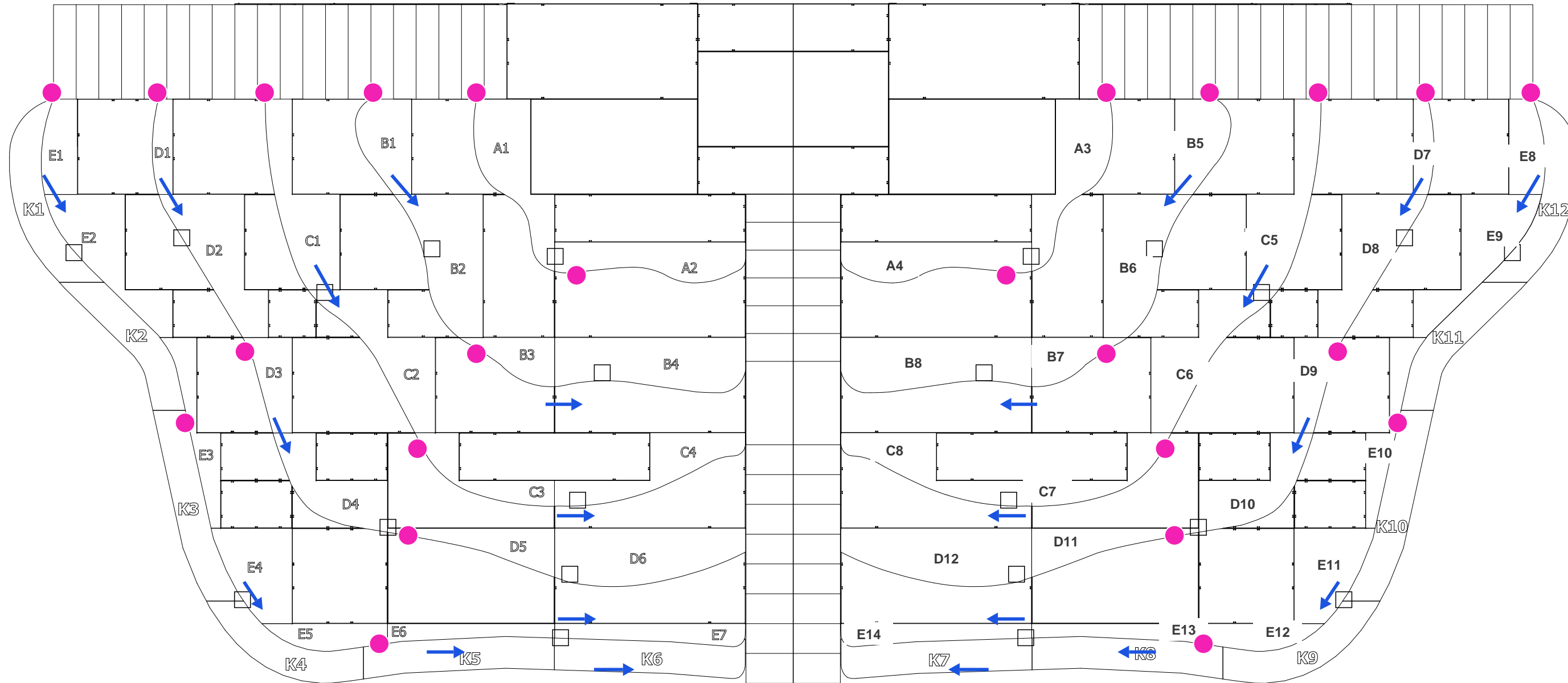
CH	FUNCTION	VALUE
+0	RED	0-255 = intensity
+1	GREEN	0-255 = intensity
+2	BLUE	0-255 = intensity
+3	WHITE	0-255 = intensity
+4	-	not used (spacing)

Actual channel = group DMX start + CH offset (starts TBD).

DMX START	SEGMENTS	LENGTH	MAX WATTS	MAX AMPS
	A1	9'-4" / 2845 mm	65	2.7
	A2	9'-4" / 2845 mm	65	2.7
	B1 + B2	11'-2" / 3404 mm	78	3.3
	B3 + B4	14'-3" / 4343 mm	100	4.2
	C1 + C2	16'-1" / 4902 mm	112	4.7
	C3 + C4	14'-7" / 4445 mm	102	4.3

GlowbackLED 24VCS3596IP65RGBW - 24V RGBW PWM tape, 7 W/ft.  
 DMX: 4 ch (RGBW) per group on 5-channel spacing; 5th channel unused.  
 Lengths from SGPS pixel counts, +/-2-3% pending dimensioned drawing.  
 DMX start channels TBD pending final rack locations.  
 SR half (A3-A4, B5-B8, C5-C8, D7-D12, E8-E14) mirrors the SL half; groups repeat.

DMX START	SEGMENTS	LENGTH	MAX WATTS	MAX AMPS
	D1 + D2	10'-3" / 3124 mm	72	3.0
	D3 + D4	12'-4" / 3759 mm	86	3.6
	D5 + D6	16'-6" / 5029 mm	116	4.8
	E1 + E2	11'-9" / 3581 mm	83	3.4
	E3 + E4	12'-4" / 3759 mm	86	3.6
	E5 + E6 + E7	22'-1" / 6731 mm	154	6.4
	<b>TOTAL</b>	<b>160'-0" / 48768 mm</b>	<b>1120</b>	<b>46.7</b>



Kenny Gay - kenny@kg3.io - 615.904.5640  
 Nashville, TN  
**KG3 LLC**

SGPS #10883 TASK 405 - 7/8/2026  
 JOB: CG TOUR - SCENIC LED ON BAND RISERS  
 LED PWM CHANNEL MAP  
**CG TOUR - CENTER BAND RISER**

STANDARD TOLERANCES			
MACHINING TOLERANCES			WELDING/ASSEMBLY
IMPERIAL	METRIC	DIMENSIONS IN INCHES UNLESS OTHERWISE SPECIFIED	DIM 0' - 12" ± 1/16"
.1X ± 1/64"	X. ± .01"	MACHINE FINISHES = 125 RMS	DIM 13" - 120" ± 1/8"
.XX ± .010"	XX ± .005"	BREAK EDGES TO R0.010"	DIM 121" + ± 1/8"
.XXX ± .005"	XXX ± .001"	ANGULAR TOL ± 1/2°	ANGULAR ± 1/2°
.XXXX ± .0005"			

**MATERIAL :**  
 FABRICATE ASSEMBLY\_(Karol G Center Band Riser )